



Firma: Player Plus doo  
Adresa: Svetogorska 9  
Telefon: +381 11 3347 442  
Fax: +381 11 3347 615  
PIB: 106966344  
E-mail: porudzbine@player.rs

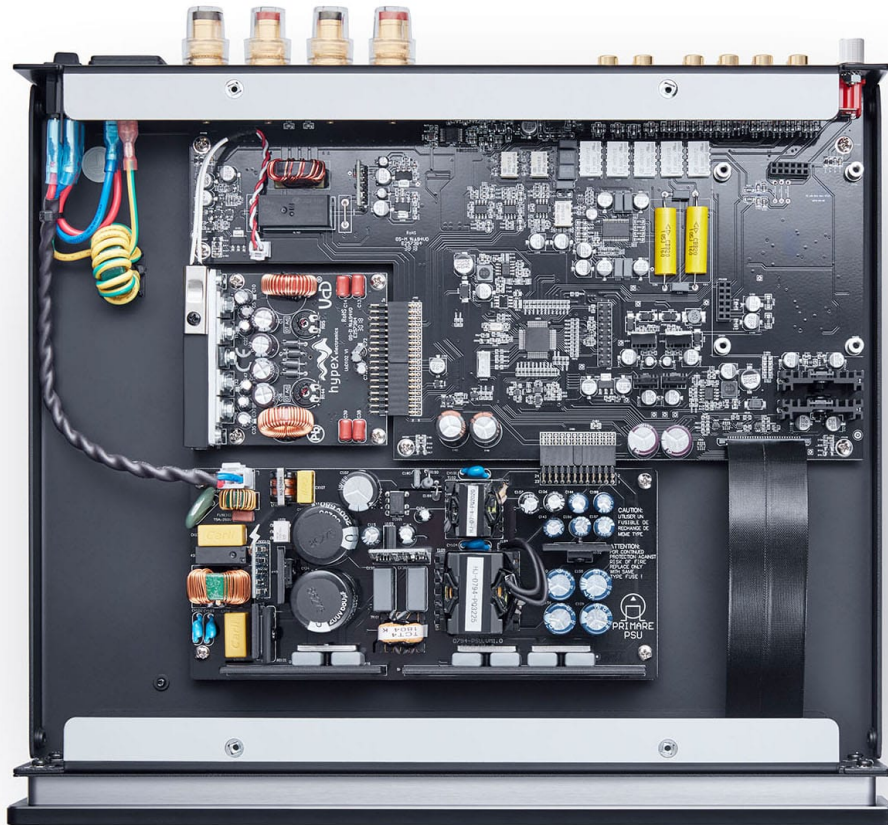
## Primare I15 Analog Titan Integrisano Pojačalo

---

Šifra: 16198  
Kategorija proizvoda: Integrisana Pojačala  
Proizvođač: Primare

Cena: **107.880,00** rsd

Primare I15 Analog Titan Integrisano Pojačalo



## Technology

With the three-quarter-sized compact cabinet of I15, even greater possibilities open up for providing the highest quality music performance in even the smallest of living spaces.

I15 utilises the same Hypex all analog class D power module as used in the award winning I15 Prisma. But, without the need to provide power to the digital to analog conversion stage and network player found in

the I15 Prisma, the power supply has been configured to allow I15 to perform with even greater drive and detail.

## **The look and feel of Scandinavia**

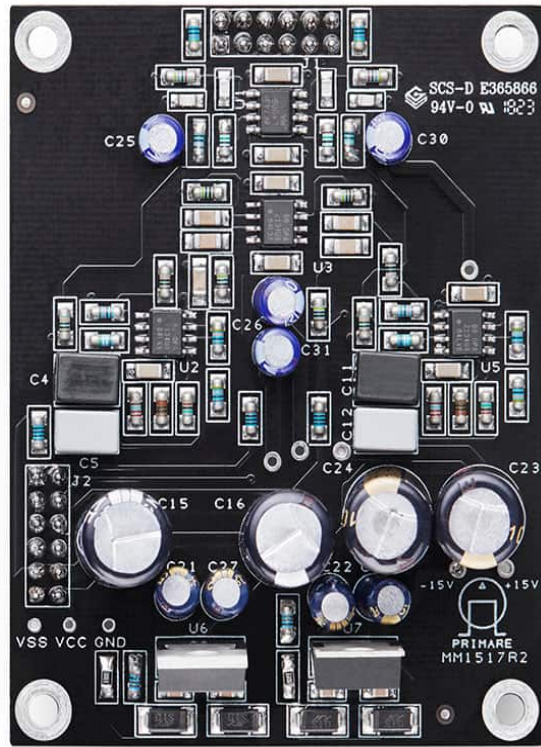
We believe that every aspect of our products – the way they look, the satisfying feel of the controls – contributes to the overall experience of living with Primare. As a result, Primare products exude the hallmarks of Scandinavian design – simple, elegant designs, with approachable and easy to understand functionality.

An example of this is the compact, essentially three-quarter sized, of the 15 series, cabinets creating the sense of perfect proportions being just right for allowing placement within any living environment – or as

we say lagom, not too much not too little, everything in balance, proportion, and harmony.







## System Building

With the 15 Series, we offer a carefully considered array of models in order to allow for the best selection to fit any of your system needs. For example, the ultimate 15 Series system might be the DD15 CD transport, SC15 Prisma preamplifier and network player, I15 analog integrated amplifier, and R15 MM/MC phono preamplifier, allowing for the best performance, analog or digital, with the greatest number of connection options. However, there may be no need for additional digital inputs, MC phono preamplification may not be requirement, or simply to address budget or size considerations, a system composed of CD15 Prisma CD and network player with an I15 MM integrated amplifier with MM15 MM phono module installed could be assembled. This compact and reasonably priced system provides multiple analog source playback, including vinyl disc, as well as digital disc, stored or streamed media playback, with remarkable power, control, and connection flexibility.

**Output power** 2 x 60W/100W 8/4 ohms

**RCA** 5 x stereo analog pair inputs



**MM** optional MM phono stage board

**RCA** 1 x stereo analog pair line output

**RCA1** x stereo analog pair PRE output

**C25 remote**IR system control

**IR3.5 mm in/out**

**RS232**outboard system control port

**12V triggerout**

**Dimensions** 350 x 73 x 339 mm (WHD)

**Weight** 6.5 Kg

**Finish**black or titanium