

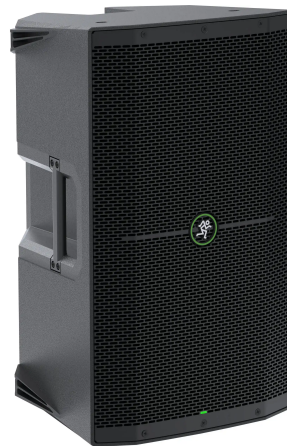
MACKIE Thump212XT - Aktivni zvučnik

Šifra: 16857

Kategorija proizvoda: Aktivne Zvučne Kutije

Proizvođač: MACKIE

Cena: 56.280,00 rsd



Mikser Thump212XT-a ima dva XLR 1/4"-na Mic/Line kanala sa pripadajućim Gain kontrolama, dok XLR izlaz omogućava povezivanje dodatnih zvučnika u lanac. 3.5-milimetarski TRS Aux ulaz raspoloživ je na drugom kanalu, za lako povezivanje vašeg omiljenog prenosivog plejera. Čvrsta šasija od polipropilena otporna na bilo kakve spoljašnje uticaje garantuje da će uređaj biti sačuvan od potencijalnih oštećenja pri transportu. Pri dnu kabineta prisutni su i žljebovi za montiranje. Tu je i mogućnost upotrebe 212XT-a kao podnog monitora (usled ugaonog dizajna), za koncertni/izvođački monitoring na bini.

At a Glance

1400W ultraefficient Class-D amplifier

Built-Like-A-Tank to conquer every gig while lightweight for easy loading

Frequency response: 47 Hz to 20 kHz

Max SPL: 128 dB

12" high-performance woofer

1" compression driver

Outdoor mode optimizes voicing for open air venues

Built-in Feedback Eliminator reduces squeals and out of control rumble

Music Ducking mode automatically reduces the level of Ch.2 when Ch.1 receives signal

Front LED On/Off switch

Standard pole mount

M10 flypoints for permanent install

Monitor wedge provides optimal angle for use as a floor monitor

Universal power supply

Application-Specific Voicing Modes

Under the hood of ThumpXT is some powerful processing that you can tap into to up your sound quality game. With 4 different application-specific voicing modes, you can instantly optimize your speakers for how you use them at the push of a single button.

Music: Made to enhance pre-recorded music

Live: Great for general sound reinforcement

Club: Provides a low-end punch

Monitor: Optimizes the speaker for use as a floor wedge keeping feedback in check

Indoor / Outdoor

Ever bring your speakers from inside a room to the scary outdoors and wonder why it sounds so different? You're not alone, and lucky for you we've thought of everything. When you set up your system out in the wild, just push the Outdoor Mode button and your lovely, full sound is restored.

Bluetooth Connectivity

Easily stream music directly to the speaker and enjoy the wireless freedom to dance around while playing DJ. And while you're at it, you can dive into the Thump Connect 2 App and adjust anything from system EQ and Voicing Modes to channel levels and venue-specific presets.

Bluetooth connectivity for streaming, speaker linking, and control

Download the Thump Connect 2 app for complete wireless control

Link 2 ThumpXT loudspeakers for a powerful, wireless, music playback system in both stereo and dual-zone configuration

Flexible Inputs / Outputs

Channel 1 features a combo XLR-1/4" input that accepts mic or line signals

Channel 2 features a combo XLR-1/4" line input plus stereo 3.5mm input

Thru output contains audio from both input channels

Performance for a New Generation

These are the loudest, most powerful, and best sounding Thump loudspeakers ever, and they are ready to take on your most demanding gigs. Completely redesigned from the ground up, Thump has beefier drivers, 1400W Class-D amplifiers, and powerful tools to make your next gig easier than ever.

Music Ducking

You've got music playing nice and loud, but it's time for another announcement. Sure, you could mess with your levels every time, but who's got time for that. Simply press the Music Ducking button, and channel 2 will automatically turn down whenever you speak into the mic on channel 1.

Feedback Eliminator

Ever get a little too up close and personal with the microphone only to hear a loud, ear-destroying squeal? That's commonly known as feedback. And it's an unfortunate issue that physics won't change its mind on. But wait! Hit the Feedback Eliminator button and laugh in the face of those silly acoustic laws.

Mackie Thump212XT Specs

Configuration: Active 2-Way

Enclosure Type: Bass-Reflex Loudspeaker

Total Power Capacity: 1400 W Peak

Amplifier Class: Class-D

Drivers

HF Driver: 1 x 1" / 25.4 mm Titanium Dome Compression Driver

MF Driver: None

LF Driver: 1 x 12" / 304.8 mm Woofer

Performance

Frequency Response: 47 Hz to 20 kHz -10 dB

Maximum SPL: 128 dB SPL

Connectivity

Audio I/O: 2 x Combo XLR-1/4" TRS Balanced/Unbalanced Mic/Line Input

1 x 1/8" / 3.5 mm TRS Female Unbalanced Line Input

1 x XLR 3-Pin Male Balanced Line Output

Network I/O: None

USB: None

Wireless Connectivity: Bluetooth

Signal Processing

EQ: None

Parametric EQ: None

Semi-Parametric EQ: None

Filters: None

Alignment Delay: None

Phase Adjustment: None

Digital Signal Processing Venue Settings, Voicing Modes

Power

AC Input Power - Universal:

100 to 240 VAC, 50 / 60 Hz

AC Power Connector: 1 x IEC

Power Consumption: 75 W

Physical

Mounting: 1 x Pole Socket (Bottom)

M10 Fly Point

Handles: 1 x Each Side

1 x Top

Dimensions: 614.7 x 358.1 x 355.6 mm

Weight: 13.3 kg