

Rega Reference EBLT drive belt

Šifra: 18568
Kategorija proizvoda: Dodatna oprema za gramofone
Proizvođač: Rega

Cena: 4.080,00 rsd



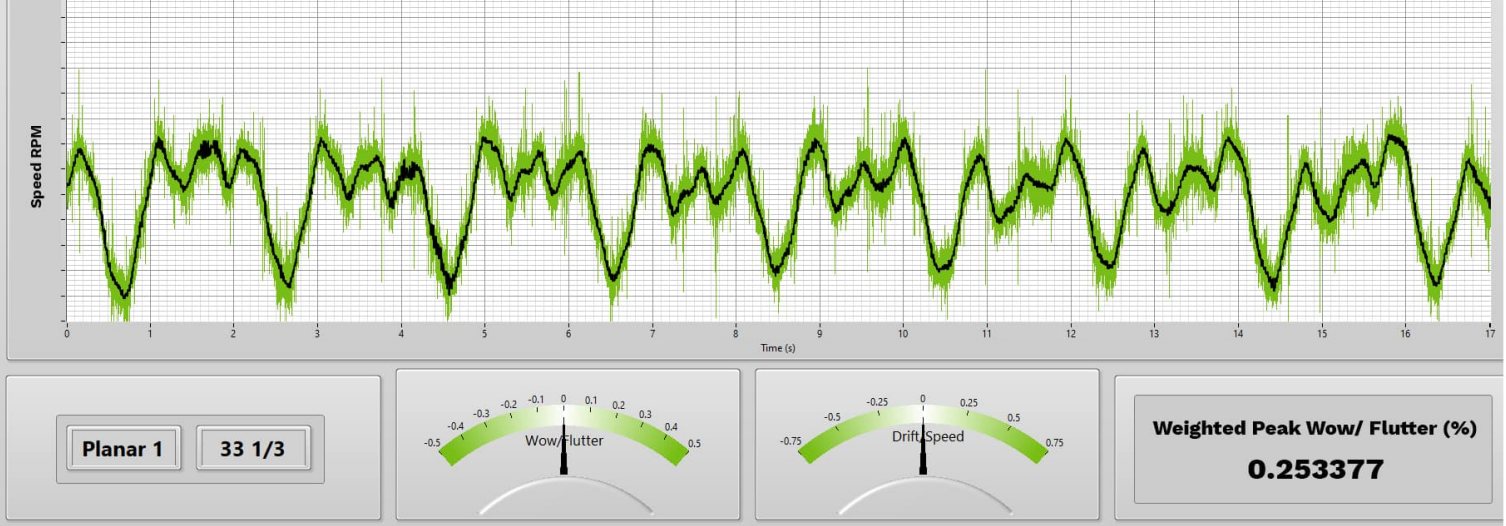
The
Rega

Reference EBLT (many years of R&D and advanced tooling trials. The most accurate drive belt we have ever produced, the Reference EBLT is now fitted as standard to all Planar 8 and Planar 10 turntable models as standard. The Reference belt is suitable for all Rega turntables but highly recommended for the Planar 6 and any Planar 3 using the Rega Neo TT PSU.

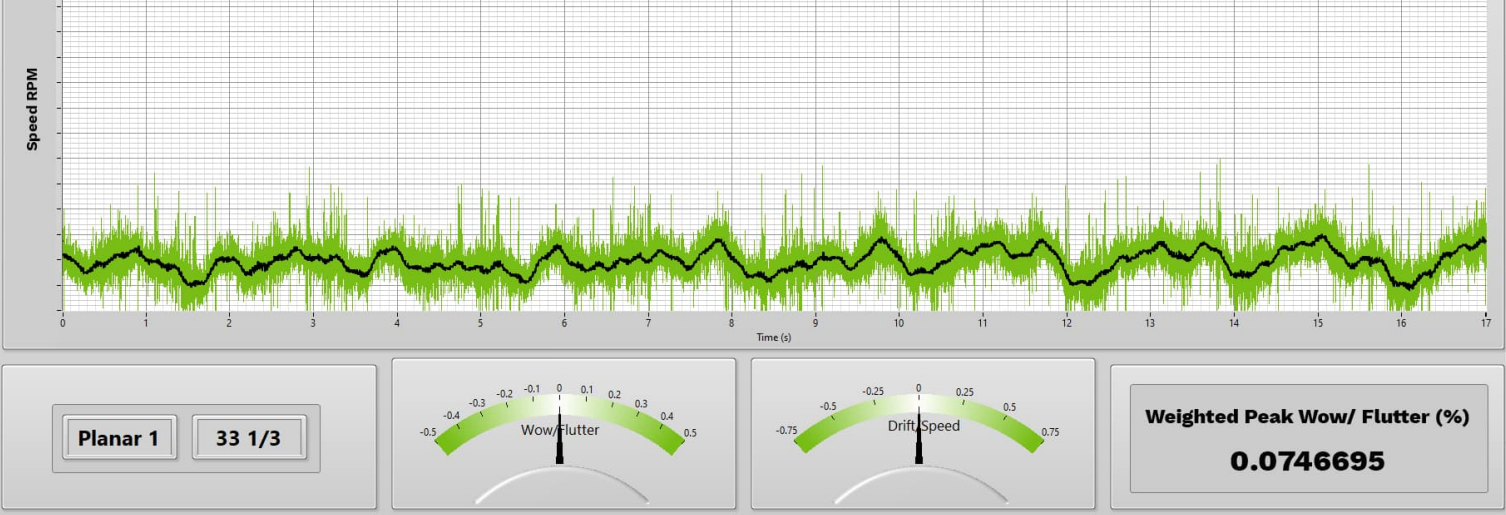
Each belt is moulded on our highly accurate custom tooling using a unique secret blend. Once moulded, the belts are cryogenically frozen and barrelled to remove any excess flash in order to create perfect cross sectional roundness which is critical for accurate speed and stability. In normal use and conditions, the lifespan of the EBLT drive belt is 50% longer than the previous model. All Reference belts go through a unique curing process which guarantees the highest achievable level of accuracy.

Below you can see a direct comparison taken from our custom test software. You can compare the old belt (top) versus the latest EBLT reference belt (bottom). We have used the same Planar 1 turntable. The only part that has changed is the drive belt. You can clearly see a notable reduction in weighted peak Wow / Flutter measurements produced by the increased accuracy and cross sectional roundness of the EBLT belt. The standard belt measures 0.253% / the Advanced EBLT measures 0.162% and the Reference EBLT measures 0.075%

Old Rega drive belt fitted to reference Planar 1.



Rega REFERENCE EBLT drive belt fitted to reference Planar 1.



Rega drive belt comparison

Advanced EBLT monomer

Diameter / cross sectional roundness

Improved stability / Speed accuracy

Lifespan

50% longer lifespan than a polychloroprene belt